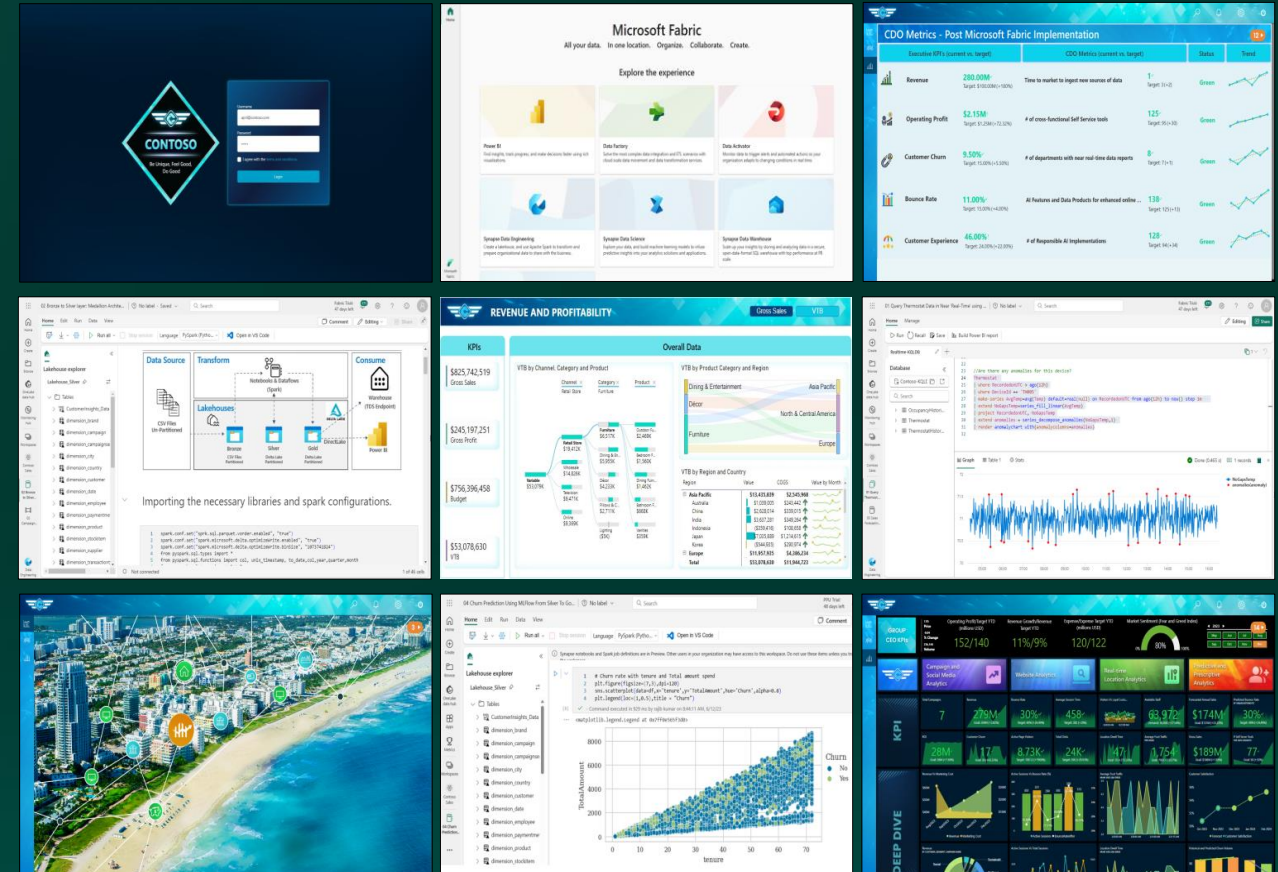




Microsoft Fabric DREAM Demo

Embracing a lake-centric and open architecture, Microsoft Fabric addresses the challenge of having departmental silos, data duplication, frequent data movements, and data inconsistencies.



Legal Notices

This presentation, demonstration, and demonstration model are for informational purposes only. **Microsoft makes no warranties, express or implied, in this presentation demonstration,** and demonstration model. Nothing in this presentation, demonstration, or demonstration model modifies any of the terms and conditions of Microsoft's written and signed agreements. This is not an offer and applicable terms and the information provided is subject to revision and may be changed at any time by Microsoft.

This presentation, demonstration, and/or demonstration model do not give you or your organization any license to any patents, trademarks, copyrights, or other intellectual property covering the subject matter in this presentation, demonstration, and demonstration model.

The information contained in this presentation, demonstration and demonstration model represent the current view of Microsoft on the issues discussed as of the date of presentation and/or demonstration, and the duration of your access to the demonstration model. Because Microsoft must respond to changing market conditions, it should not be interpreted to be a commitment on the part of Microsoft, and Microsoft cannot guarantee the accuracy of any information presented after the date of presentation and/or demonstration and for the duration of your access to the demonstration model.

No Microsoft technology, nor any of its component technologies, including the demonstration model, is intended or made available: (1) as a medical device; (2) for the diagnosis of disease or other conditions, or in the cure, mitigation, treatment or prevention of a disease or other conditions; or (3) as a substitute for the professional clinical advice, opinion, or judgment of a treating healthcare professional. Partners or customers are responsible for ensuring the regulatory compliance of any solution they build using Microsoft technologies.

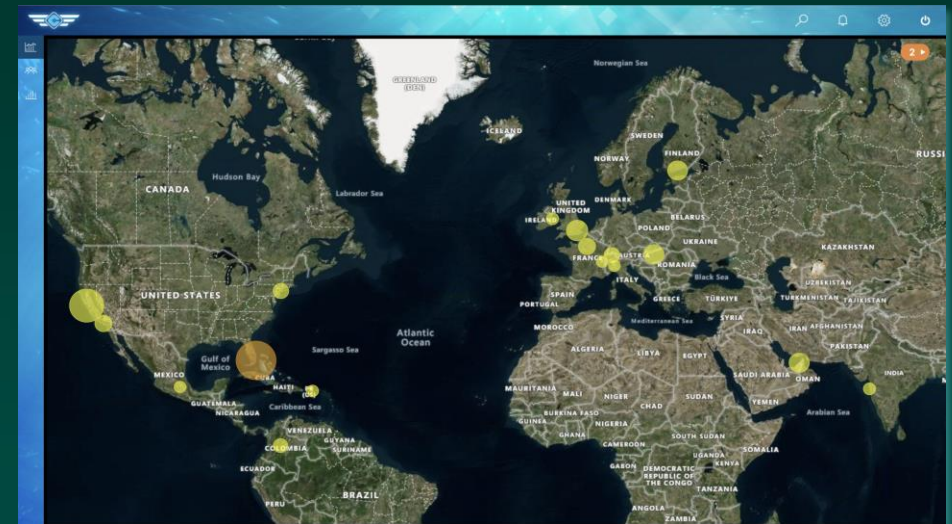
Demo Scenario

Contoso is a large enterprise with a presence in various industries such as retail, manufacturing, and finance. On the retail side, they have thousands of brick-and-mortar stores across the world.

When April takes the helm of Contoso as its new CEO, she soon discovers some discouraging numbers for some of their most important company KPIs like revenue, churn rate, operating margin, and customer experience. She talks to her Chief Data Officer, Rupesh, who is a data-driven decision maker.

A while ago Contoso leadership discovered that millennials were leaving them in large numbers because they didn't have the brands and products that captivated their attention.

The demo illustrates how Rupesh and his team leverage Microsoft Fabric to literally transform his CDO KPIs. The demo also shows how they build an end-to-end analytics project focusing on role-centric data management experiences. We will see how the improved CDO KPIs finally lead to a green dashboard for April, their CEO.



Contoso: Organization Chart



Meet the characters



Rupesh - Chief Data Officer

Oversees a range of data-related functions that include data management, ensuring data quality, and creating data strategy.



Andre - Chief Information Officer (CIO)

Responsible for the management and implementation of information technologies.



Eva - Data Engineer

Builds data pipelines and transforms data into formats that can be easily analyzed by developing, maintaining, and testing infrastructures for data generation.



Miguel - Data Scientist

- Uses machine learning techniques to get better insights for the business
- Develops predictive models



Serena - Data Analyst

- Collects, cleans, and interprets data sets to solve business problems
- Data visualization and representation



Wendy - Business Analyst

- Derives valuable insights from data using the power of analytics and AI

Introducing Microsoft Fabric

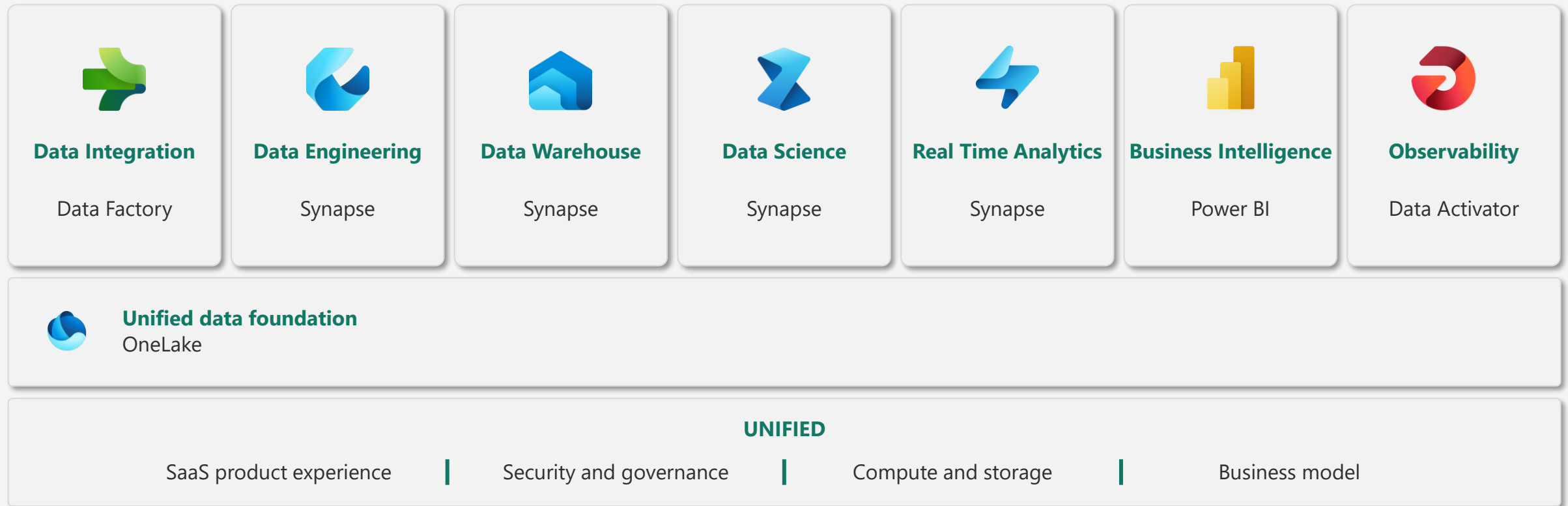
Microsoft Fabric enables you to manage your data in one place with a suite of analytics experiences that work together seamlessly, including:

- Data Factory
- Synapse Data Engineering
- Synapse Data Warehouse
- Synapse Data Science
- Synapse Real-Time Analytics
- Power BI
- Data Activator



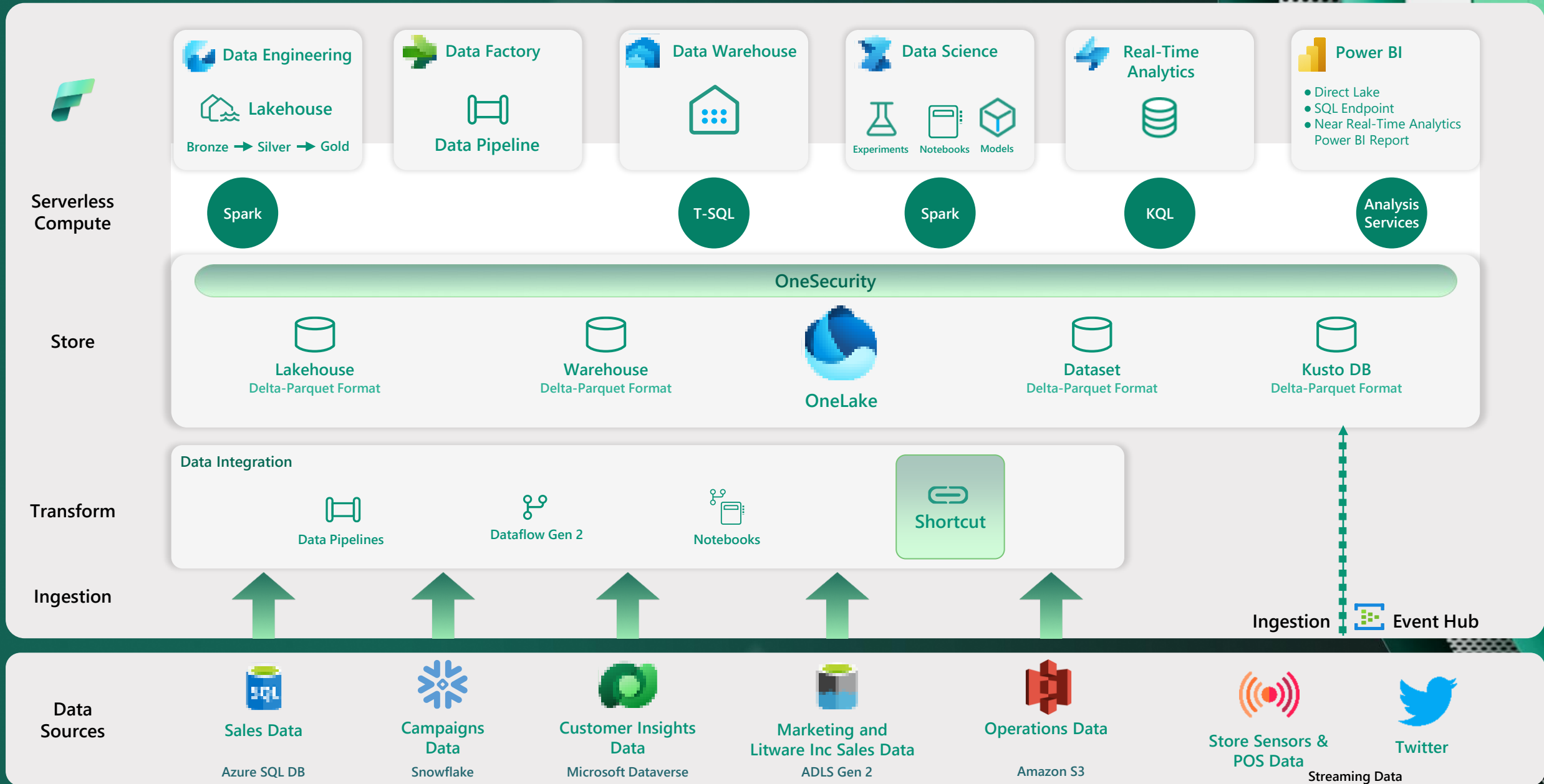
Microsoft Fabric does it all—in a unified solution

An end-to-end analytics platform that brings together all the data and analytics tools that organizations need to go from the data lake to the business user.

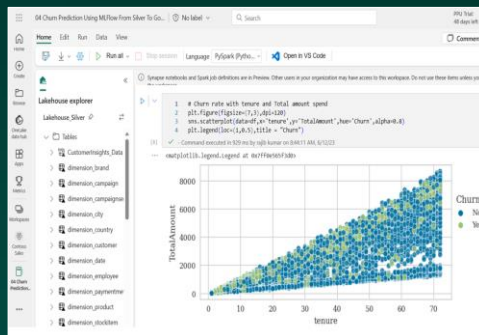
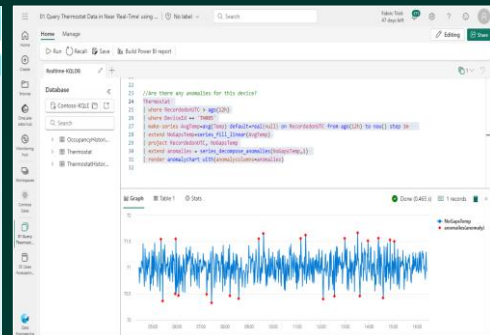
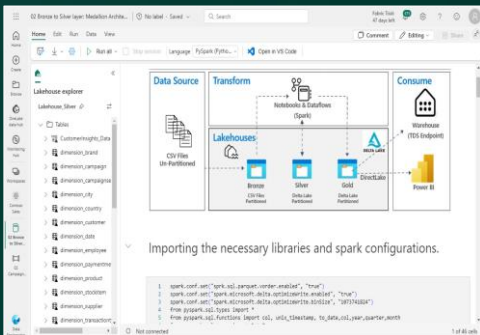
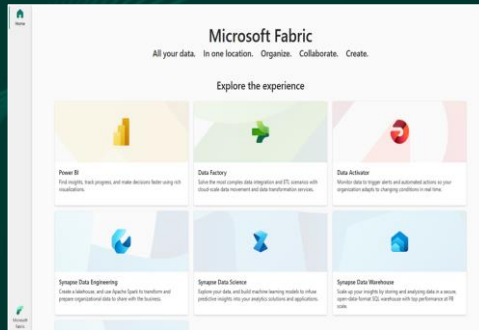




Microsoft Fabric DREAM DEMO Architecture



Fabric DREAM Demo



Resources

For demo feedback and other questions please email:
dreamdemos@microsoft.com

DREAM Demos and DPoC assets for partners in MPN Portal at:
<https://aka.ms/dreams>